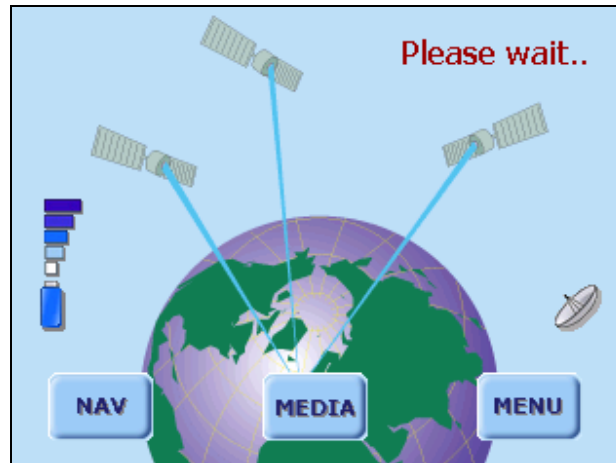



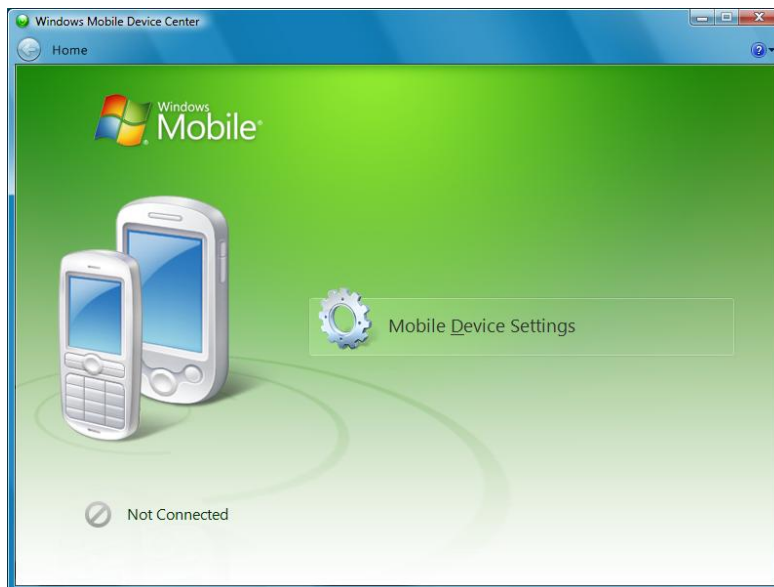
Important information about Windows Mobile Device Centre (WMDC) 6.1

Once you have installed WMDC 6.1 you will need to follow the procedure below in order to allow the device to connect to the PC.

Switch on the Road Angel Navigator 6000 using the slider switch on the back of the unit. Wait for the unit to start up and display the screen below.



Run  from the desktop or start Menu.
Windows
Mobile
Device
Center



Connect the USB lead to your PC, then connect the small USB plug into the USB port on the side of Road Angel Navigator 6000.

After a pause, WMDC will briefly show that it is connecting to the Road Angel Navigator 6000.



WMDC will not show that the device is connected and will return to the screen below.



However, you can now run the update software which will communicate with the device.