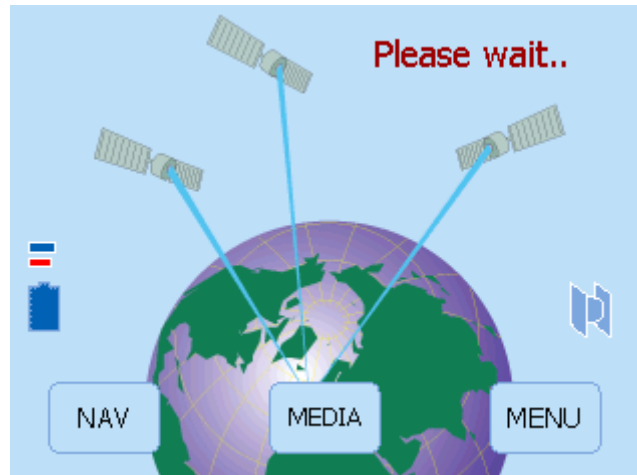


Important information about Microsoft ActiveSync

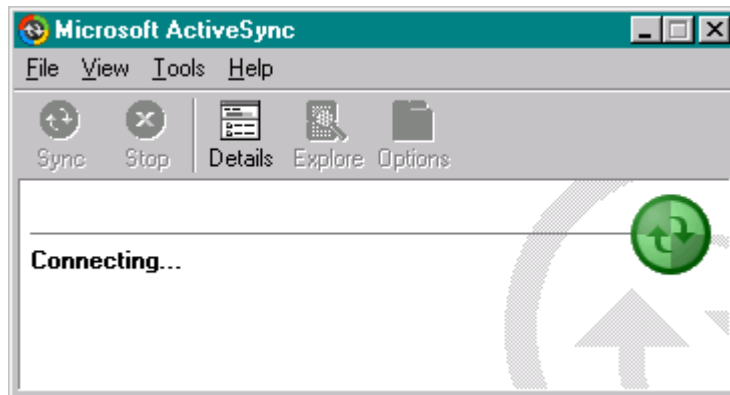
Once you have installed Microsoft ActiveSync you will need to follow the procedure below in order to allow the update software to connect to Road Angel Navigator 6000.

Switch on Road Angel Navigator using slider switch on the back of the unit. Wait for the unit to start up and display the screen below.

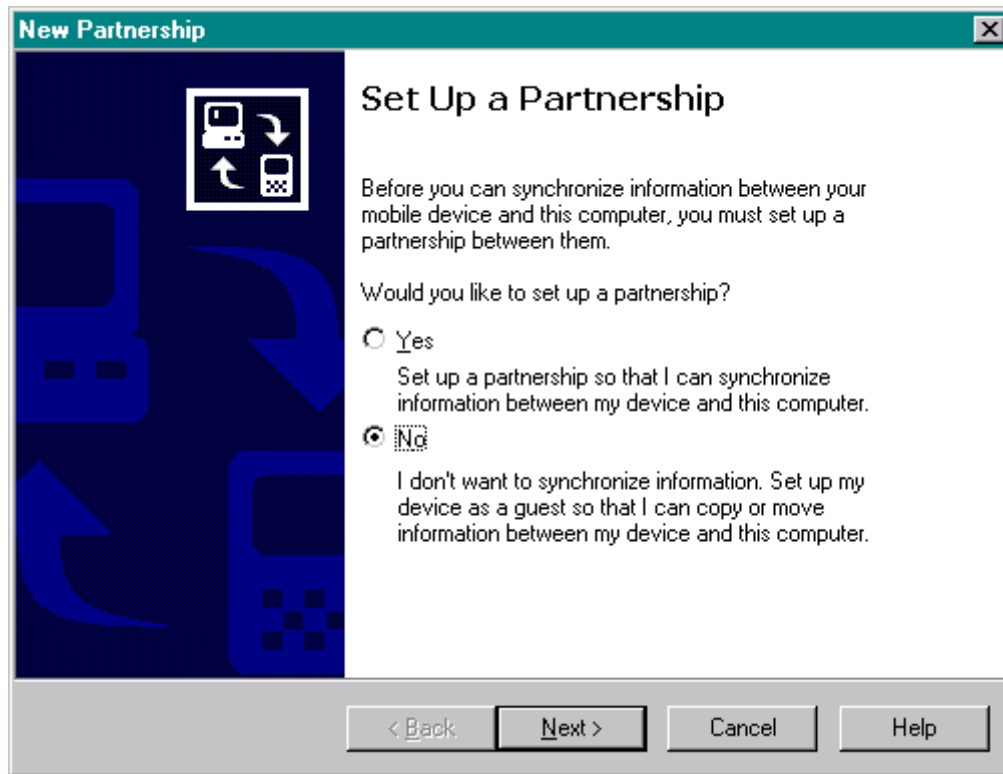


Connect the USB lead to your PC, then connect the small USB plug into the USB port on the *side* of Road Angel Navigator 6000.

After a brief pause, ActiveSync will automatically detect Road Angel Navigator 6000.



It will then prompt you to set up a partnership. Select No, and then click Next



The device will appear connected as a Guest. You can then use the Road Angel Navigator 6000 software to carry out the update.

